

CREATIVE HOMES HOBART

BUILT BETTER | BUILT RIGHT



ONYX 196



4



2



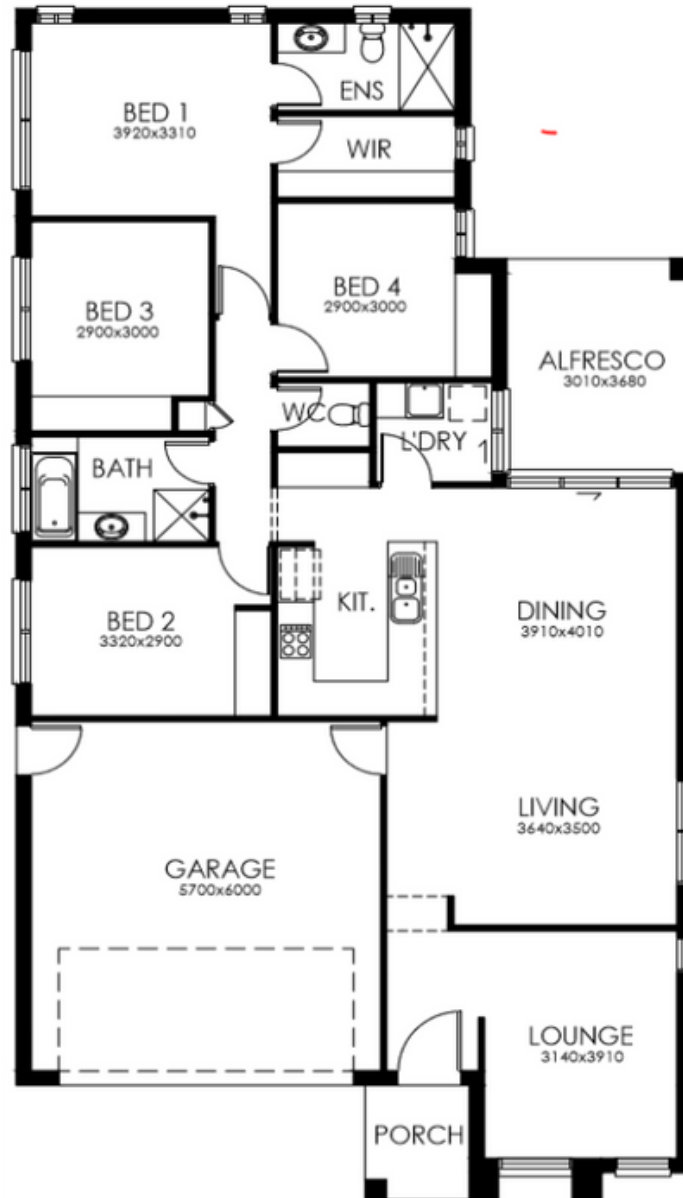
2

Capturing perfectly the trend towards larger single storey family homes, the Onyx ticks all the right boxes with a clever floor plan. Every member of the family will find their space in this four bedroom home that combines traditional design with modern style. The master suite includes a walk in robe and ensuite and is adjacent to a third and fourth bedroom making it ideal for young families. A fourth bedroom or study is located off the kitchen. Rainy days are covered with a direct walk in from the garage and a separate lounge area from the open plan living and dining area will make family movie nights memorable.

6272 3000 | creativehomeshobart.com.au

CREATIVE HOMES HOBART

BUILT BETTER | BUILT RIGHT



SIZE 196.72SQM

WIDTH 11.0M

LENGTH 20.42M

6272 3000 | creativehomeshobart.com.au