

# CREATIVE HOMES HOBART

BUILT BETTER | BUILT RIGHT



## OLYMPIA 351



4



2



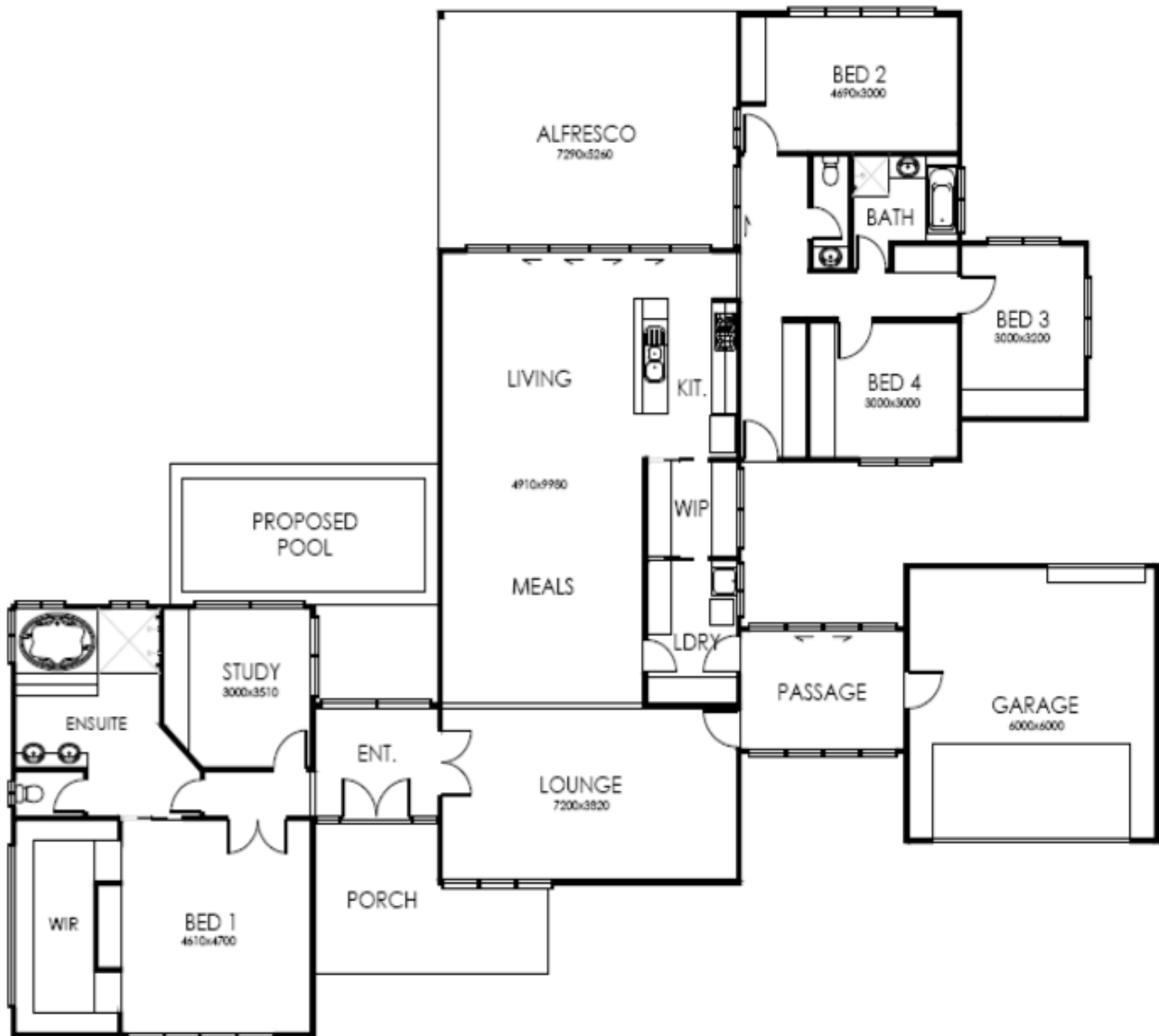
2

The Olympia is all about that luxurious, resort lifestyle with an expansive open plan entertainer's kitchen, including walk in pantry, which is adjacent to the large dining room and living space. Beyond the dining room is the extra-large alfresco entertaining space that is separated by bi-fold sliding doors that can be opened to create seamless integration between the indoors and outdoors. The extravagant master suite is located in a separate wing accessed via a further lounge area and features a private entry from outside, study, ensuite and large walk-in-robe will make you feel like you are living in a five star resort. A further three bedrooms are located adjacent to the living zone, all with built in robes and a walk in linen press.

6272 3000 | [creativehomeshobart.com.au](http://creativehomeshobart.com.au)

# CREATIVE HOMES HOBART

BUILT BETTER | BUILT RIGHT



**SIZE** 351.67SQM

**WIDTH** 27.94M

**LENGTH** 22.71M

6272 3000 | [creativehomeshobart.com.au](http://creativehomeshobart.com.au)