

# CREATIVE MODULAR HOMES

BUILT BETTER | BUILT RIGHT



## EUCALYPT 118



3



2

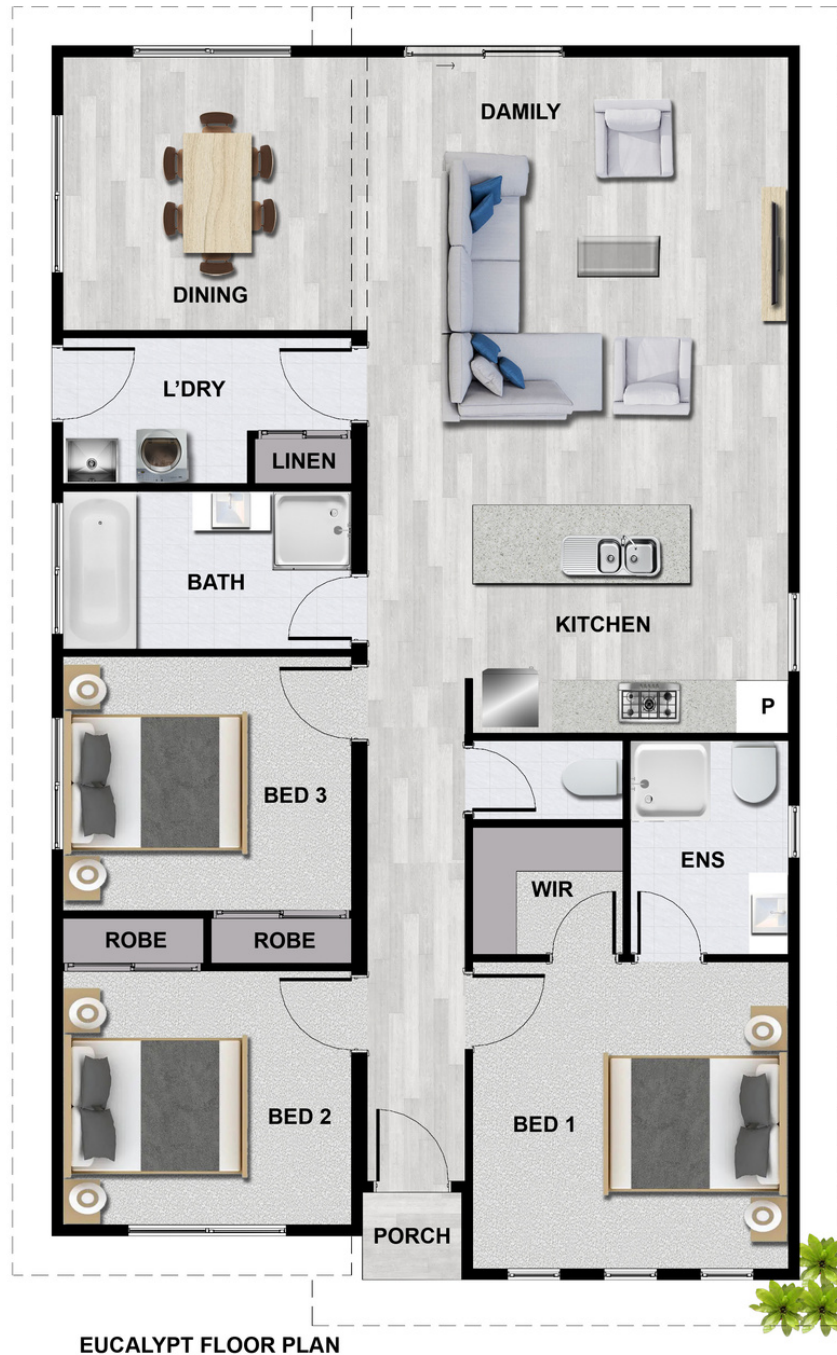
The popular Eucalypt design features three bedrooms at the front of the home and an open plan living and dining at the back.

With a spacious laundry room and walk in robe and en suite in the main bedroom, this design is sure to impress.

6272 3000 | [creativemodularhomes.com.au](http://creativemodularhomes.com.au)

# CREATIVE MODULAR HOMES

BUILT BETTER | BUILT RIGHT



EUCALYPT FLOOR PLAN

**SIZE** 117.1SQM

**WIDTH** 14.09M

**LENGTH** 8.52M

6272 3000 | [creativemodularhomes.com.au](http://creativemodularhomes.com.au)